

Securatread

S T A I R N O S I N G S

PRODUCT DATA SHEET

Securatread Stair Nosing

Securaglow

SG6

Specifications

Base Material	Alloy : 6060, Temper : T5
Finish	Clear anodised, Black anodised
Tread Width	69mm
Front Depth	10mm
Tread Thickness	4.8mm
Glow Strip	12mm photoluminescent strip
Insert Type	Thermoplastic santoprene
Insert Width	50mm
Insert Colours	Black, yellow, light grey, white
Insert Slip Rating	P5
Code Compliance	AS1428.1-2021
Features	Pre-drilled and countersunk for concealed fixings - once installed, insert covers all fixings
Application	Surface mounted on hard floor finishes

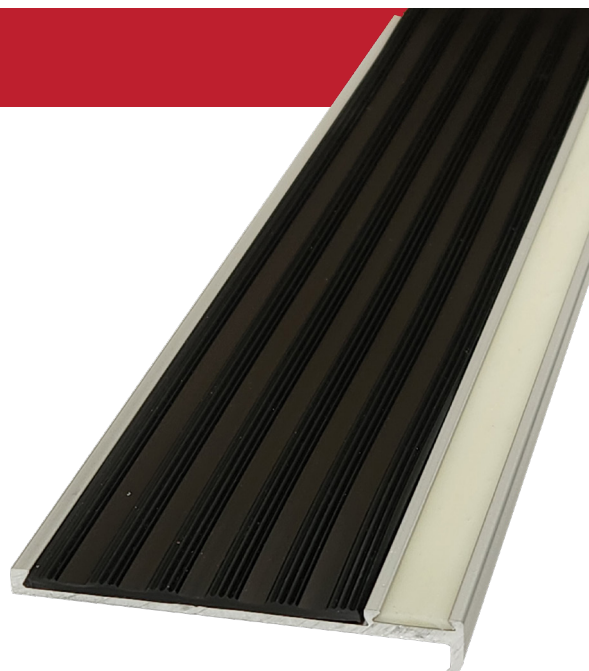
LRV

Black
Dry 4.07
Wet 3.96

Yellow
Dry 46.89
Wet 46.76

Light grey
Dry 36.02
Wet 35.96

White
Dry 74.96
Wet 74.37



PRODUCT DATA SHEET

Securatread Stair Nosing

Securaglow

SG6

Specifications (cont.)

Glow Strip Compliance

Securatread Securaglow products are designed to ensure evacuation routes have sufficient visibility in an emergency for compliance with NCC 2019 EP4.1. The products will be effective in all light conditions including during failure of the main lighting at which point Securatread Securaglow's photoluminescent products remain luminous and therefore clearly visible, meeting the requirements of EP4.1.

All products have been independently tested in accordance with UL1994 to 10 metres visibility to ensure compliance with EP4.1.

The performance of Securatread Securaglow's photoluminescent stair nosing insert has been verified by testing in accordance with NCC 2019 specification E4.8 3(c).

When exposed to an illumination of 54 lux for one hour using a lamp of CCT 400k gave a reading of 38mcd/m² after 90 minutes. This well exceeds the minimum luminance of 30mcd/m² after 90 minutes required to meet NCC BCA Vol 1 specification E4.

